

S/M FLECKVIEH CATTLE

Private Treaty Bull Sale

w/ March 4 Telephone Bid-off

Jeff Sorenson

48186 257th Street
Garretson, South Dakota 57030

sorenson@augie.edu

605-359-8728 (cell)

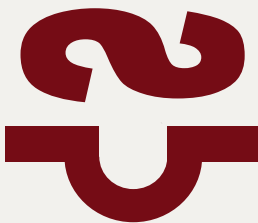
www.smfleckvieh.com



KUNTZ KINGPIN 2H

S/M FLECKVIEH CATTLE

2024 Sale Bulls



Welcome to the 2024 lineup of sale bulls at S/M Fleckvieh Cattle. These bulls are the product of **our 49th year** breeding Fleckvieh Simmental cattle, beginning in 1975.

The bulls sell by private treaty, with this information available in mid February. They are pre-priced (see pg 17). Let us know if you want a bull, and if you are the only person asking for that bull by **noon on March 4**, he is yours at that price. If more than one person asks for a bull, we will contact you to arrange a **telephone bid-off after 6 pm on the evening of March 4**—only among the customers who have asked for that bull.

A half-down deposit will hold your bull until we semen check in April. We'll give him his spring pre-breeding shots, including Bovishield Gold, Pinkeye and Footrot vaccines, and deliver to you within 250 miles.

Expected Progeny Differences (EPDs)

We pay close attention to EPDs, aiming for a balance of the most important economic traits. After generations of breeding to lock in dependable genetics, you will see the results in the balanced EPDs of these bulls. There are a couple calving ease bulls that also have good growth and maternal EPDs, and most are high growth bulls that also have useful calving ease and maternal trait EPDs.

A sample EPD chart
S/M Linchpin L001

CE	WW	YW	MCE	MWW	API	TI
11	92	129	4	82	133	85
10	2	2	30	2	1	1

On this sample chart, the top numbers are the raw EPDs for each trait as calculated by the American Simmental Association. The bottom row of numbers are the animal's ranking among all fullblood cattle in the breed. For example, this bull is in the top 10% for Calving Ease, the top 2% for Weaning and Yearling Weight, and his All Purpose and Total Indexes are both in the top 1% for fullblood cattle in the ASA database.

Explanation of the EPD Chart

CE = Calving Ease Index
WW = added pounds Weaning Weight
YW = added pounds Yearling Weight
MCE = Maternal Calving Ease Index
MWW = added pounds Maternal Weaning Weight
API = All Purpose Index
TI = Terminal Index

The bottom number on the chart (with each bull) reflects the rank of that EPD, eg. an EPD ranking 10 is in the top 10% of Fullblood Simmental bulls.

Fullblood Fleckvieh Cattle

We breed Fullblood Fleckvieh Simmental cattle, whose genetics trace only to the original Fleckvieh of Germany and Austria where these beef-type Simmental cattle originated. Being Fullblood offers the maximum hybrid vigor when crossed with other breeds of cattle.

The Fleckvieh female's moderate frame, natural easy fleshing and big volume capacity help her stay in good condition and rebreed on schedule year after year, on grass and poorer roughages.

After nearly five decades of breeding and improving these cattle, most are now polled. All are tested non-diluter.

Our Breeding Goals

We focus on economic traits that add value:



- Type – big-volume, deep-fleshed cattle that are soggy, long and thick.
- Calving ease, both direct and maternal — in a range that works under commercial conditions.
- Females – tight udders with small teats, feminine, sound feet and legs, with the depth and barrel to thrive on grass and corn-stalks.
- Disposition – docile and easy to handle.
- Polled – as one of several important economic traits.
- Color – non-diluted dark red with lots of protective pigment.

Our Fullblood Fleckvieh Simmentals are run like commercial cattle, so we know how they work in the real world. We select for performance, disposition and soundness, and grow out only the best as sale bulls. They are developed slowly on a high-roughage diet of free-choice grass hay, a half oats/ corn grain mix, and access to a Flaxlic mineral tub that boosts semen quality. They grow well but stay in their working clothes, so that they're sound, fertile, ready to go to work — and will stand up for years of service for you.

Please check out our website at:
www.smfleckvieh.com. Text, email or call. I'd love to talk about Fleckvieh cattle.

Jeff Sorenson

605-359-8728 sorenson@augie.edu





S/M LINCHPIN L001

4211588

2/28/2023 BW 84 AWW 775/ 105 AYW 1302/ 102 Polled/S

Anchor D Raptor 392C

Kuntz Kingpin 2H

Kuntz Miss Moses 308A

Sibelle Arthur 39B

S/M Rietta H001

S/M Rote E071

Thick, thick, thick from early on, it's been fun to watch this chunk of a bull develop. Kuntz Kingpin really clicks with this cow family; a 3/4 brother by his granddam E071 was colored much the same and just as beefy last year.

H001, the dam of this calf is a moderate framed, big-bellied and good-

uddered young female that is typical of our Sibelle Arthur daughters.

This polled calf developed scurs around weaning time. He has a sweet disposition, easy to handle and be around.

Some of the best balanced EPDs to be found in the Fleckvieh breed—a balance of Calving Ease and powerful growth—bending the curve which is what we aim to do.

Tested Non-Diluter



S/M Linchpin L001
at weaning

CE	WW	YW	MCE	MWW	API	TI
11	92	129	4	82	133	85
10	2	2	30	2	1	1



S/M LINEMAN L282

4211578

3/23/2023 BW 94 AWW 716/ 97 AYW 1280/ 100 Polled

Anchor D Raptor 392C

Kuntz Kingpin 2H

Kuntz Miss Moses 308A

Sibelle Arthur 39B

S/M Suzanne F282

Grinaltas Scarlet PFF14S

You'll see a pattern developing here—a set of super good polled bulls by Kuntz Kingpin and out of Sibelle Arthur daughters. When Kingpin's first calves came in 2022, small and easy-calving, we pastured him his second season with heifers and a small group of Arthur daughters. We wish we'd used him on everything instead—but what a uniform, thick set of calves these are!

S/M Lineman's dam is another big-bodied, moderate female with a perfect tidy udder. This calf, for all his thickness, big top and muscle, is also smooth and attractive from front to back.

Tested Non-Diluter

CE	WW	YW	MCE	MWW	API	TI
5	78	104	0	71	98	67
50	25	35	90	35	50	35



S/M LINEBACKER L572

4211596

3/06/2023

BW 80

AWW 729/ 99

AYW 1221/ 96

Polled

Anchor D Raptor 392C

Kuntz Kingpin 2H

Kuntz Miss Moses 308A

Sibelle Arthur 39B

S/M Kari Anne E572

S/M Karinne B541

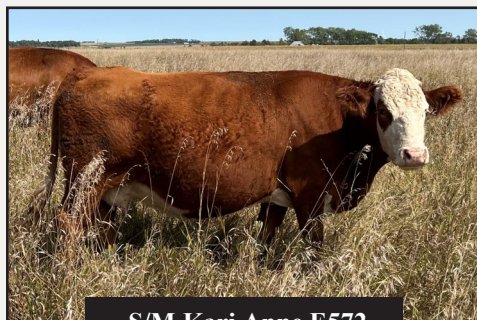
A highlight among this year's calves—as classy and yet Fleckvieh in type as they come.

The third of these Kingpin x Arthur sons, Linebacker L572

started out small (from a mature cow)

and then developed into a showy, big-middled, big-topped, long-bodied, attractively patterned young bull. Dark, dark red and polled like his Kingpin sire. Rugged in type like his Arthur grandsire.

We've had requests to purchase this calf this fall/winter—but he's available instead with his pen-mates on March 4. We are blessed with some great customers, with good cattle—I hope he ends up where he can make a difference!



S/M Kari Anne E572

Tested Non-Diluter

CE	WW	YW	MCE	MWW	API	TI
12	78	104	5	73	132	78
10	25	30	25	25	1	2



S/M LINCOLN L211

4211610

3/09/2023 BW 71 AWW 729/ 99 AYW 1317/ 103 Horned

Anchor D Raptor 392C

Kuntz Kingpin 2H

Kuntz Miss Moses 308A

FGAF Granger 060G

S/M Joelle J211

S/M Juliette X201

An interesting, productive combination in Lincoln L211. He arrived unassisted with a small birthweight out of a heifer—and then packed the pounds onto a small-framed, but long, chunky kind of a calf. Calves like this in his first calf crop are why we now use Kuntz Kingpin (who really is also very much a power bull) safely on heifers.



S/M Lincoln L211
at weaning

He's blood red with just a diamond on his head. Quiet and friendly.

Want to make moderate, but thick, easy-keeping, productive daughters? I think this guy will do that.

Tested Non-Diluter

CE	WW	YW	MCE	MWW	API	TI
13	76	105	5	75	113	71
3	30	30	20	15	10	20



S/M LEADER L412

4211602

2/14/2023 BW 70 AWW 719/ twin AYW 1260/ twin Polled

ABR Sir Arnolds Image
Sanmar Polled Pharaoh 12P
Sanmar Pol Teardrop 12M

FGAF Granger 060G
S/M Cinnamon J412
S/M Callista C452

These two Polled Pharaoh sons, Leader L412 and Ledger L413 are more than 3/4 brothers. This calf descends from our polled Anchor T Legend daughter, Callista C452.

Born a twin from a homozygous polled first-calf heifer, he had a bit of a slow start but has really come on and grown into quite a bull.

He's a solid calf, lots of muscle and middle to him. But he's also fairly fine boned and smooth, and given the generations of calving ease behind him I would expect him to calve easily.



S/M Callista C452

Tested Non-Diluter

CE	WW	YW	MCE	MWW	API	TI
11	56	68	8	58	114	65
10	99	99	4	99	10	55



S/M LEDGER L413

4211607

3/01/2023 BW 93 AWW 789/ 107 AYW 1326/ 104 Polled

ABR Sir Arnold's Image

Sanmar Polled Pharoah 12P

Sanmar Pol Teardrop 12M

FGAF Granger 060G

S/M Callie J413

S/M Carissa Y413

The second of these two Polled Pharoah sons, Ledger L413 is a bigger boned, bigger growth, softer made calf than his 3/4 brother. Just a tank of a calf. Though he too is from generations of calving ease sires, and born unassisted from a first-calf heifer, this is more of a growth bull.

The bull is very quiet, friendly, if I'm working on something in the bull pen and feel something licking me from behind—it's this calf.

This is a calf that you'll want to stand beside and put your hands on to fully appreciate how much bull is here.



S/M Ledger L413
at weaning

Tested Non-Diluter

CE	WW	YW	MCE	MWW	API	TI
8	75	111	6	70	111	73
25	35	20	10	50	15	10



S/M LANCELOT L581

4211592

3/22/2023

BW 81

AWW 755/ 102

AYW 1271/ 100

Polled

Virginia Walker 97W

Sibelle Arthur 39B

Sibelle India 25W

PHS Bank Roll 345B

S/M Karoline F581

S/M Karine D561

Again this year (the last by natural service because at nine we finally had to retire the old boy) we have two 3/4 brothers by the great sire Sibelle Arthur.



S/M Karoline F581

Very much in type like his sire,

Lancelot L581 is huge bodied, deep and wide, flat across his top—full of red meat through his rear quarter—a real beef bull. Solid patterned in color, he does have pigment on his other eye.

His dam Karoline F581 is a homozygous polled female that has given us a set of daughters as pretty as she is. Feminine females kicking out beefy, masculine sons—this cow family does this generation after generation (see Linebacker L572—from the same cow family).

We kicked around about retaining and using this bull ... but instead he's here for you.

Tested Non-Diluter

CE	WW	YW	MCE	MWW	API	TI
8	70	86	4	67	106	65
25	55	80	35	60	25	50



S/M LANDMARK L592

4211608

4/05/2023

BW 94

AWW 719/ 97

AYW 1216/ 95

Polled

Virginia Walker 97W

Sibelle Arthur 39B

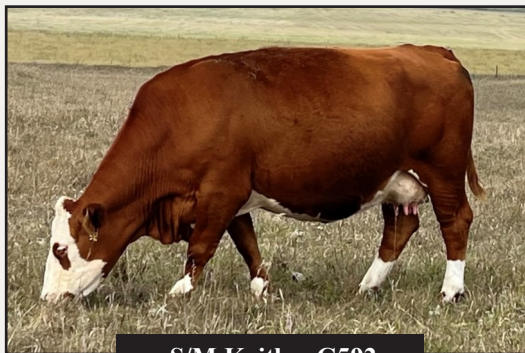
Sibelle India 25W

PHS Bank Roll 345B

S/M Kaitlyn G592

S/M Kathleen A532

Just an April calf, this guy has taken off and become a bull in the last couple months. Like his attractive dam, he's finer and cleaner made—but with a mass of rear-quarter muscle and deep middle inherited from his sire Sibelle Arthur.



S/M Kaitlyn G592

This young cow too has already given us a couple lovely, productive daughters (she's the grand-dam of Lawman L512). Arthur, too, has left us a legacy of very useful daughters. I'd use this bull on your best cows to create a set of functional, beautiful females—and keep them all.

Tested Non-Diluter

CE	WW	YW	MCE	MWW	API	TI
8	72	96	3	68	118	66
25	50	55	45	55	4	45



S/M LARIAT L402

4211615

4/06/2023 BW 95 AWW 812/ 110 AYW 1294/ 101 Homozygous Polled

Sibelle Dirty Harry 25Z
FGAF Granger 060G
Tryon Bonnie FF2E
Sir Arnolds Foresight
S/M Corinne H402
S/M Callista C452

Here we have two homozygous polled sons of FGAF Granger for your consideration. Granger gave us consistent calving ease, thickened up his calves, and left us a set of tidy-uddered, feminine, milky young females.



**S/M Lariat L402
at weaning**

Lariat L402 is our youngest bull on offer this year. He carries plenty of muscle, but is also long and smooth-made. Generations of some of the best, balanced EPD sires lie behind him—which you’ll see reflected in his own balanced numbers. These homozygous polled sires, combining both calving ease and growth ability as this guy does, are a rarity.

Tested Non-Diluter

CE	WW	YW	MCE	MWW	API	TI
9	86	117	7	78	107	74
20	5	10	10	5	20	10



S/M LAWMAN L512

4211590

2/19/2023 BW 78 AWW 685/ 93 AYW 1200/ 94 Homozygous Polled

Sibelle Dirty Harry 25Z

FGAF Granger 060G

Tryon Bonnie FF2E

IPU Radium 20A

S/M Kaileen J512

S/M Kaitlyn G592

The second of two homozygous polled FGAF Granger sons, this bull was born unassisted and small from a first-calf heifer, who is bred also for generations of calving ease (see his grand-dam, the dam of Landmark L592).



**S/M Lawman L512
at weaning**

Lawman L512 is a smaller-framed, but thick-made calf that should calve well, and make a set of moderate, functional (and all polled) females for you.

Tested Non-Diluter

CE	WW	YW	MCE	MWW	API	TI
6	69	87	3	67	103	66
40	60	75	55	65	30	45



S/M LANDLORD L171

4211603

3/20/2023 BW 108 AWW 812/ 110 AYW 1397/ 109 Polled

Anchor D Motown 865E
Double Bar D Double Down 142H
Double Bar D Classy 110C
PHS Bank Roll 345B
S/M Franchesca E171
S/M Franchesca W191

With his extra birthweight, this bull isn't for everyone—but if you want pounds on your calves from mature cows, this massive young bull will do that. He's as deep and soggy and big-middled and old-school Fleckvieh in his type as they come—with a polled head to boot.

Franchesca E171 is a feminine, milky, polled cow that puts everything into her calves. You can see this Landlord L171 calf just beating up on her, while she apparently enjoys it. She's produced five calves to date, with an average weaning weight index of 106—and bred back early each year doing so. The fertile, feminine female, producing powerful, masculine sons—what we aim for.



S/M Franchesca E171
w/ S/M Landlord L171

Tested Non-Diluter

CE	WW	YW	MCE	MWW	API	TI
0	82	113	-3	76	103	70
90	15	15	99	10	30	25



S/M LANDSLIDE L502A

4211613

3/09/2023 BW 81 AWW 684/ twin AYW 1173/ twin Horned

Anchor D Motown 865E

Double Bar D Double Down 142H

Double Bar D Classy 110C

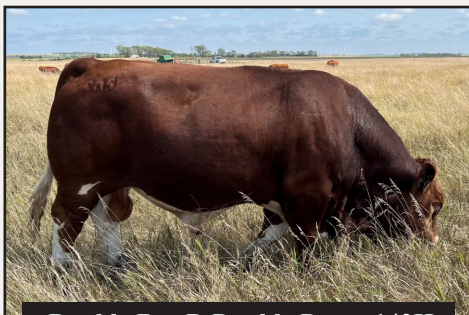
OSF Vazquex 1B

S/M Ada H502

S/M Addie C551

Landslide L502A is an honest, not terribly pretty, old-school Fleckvieh bull that will make a set of steers full of beef to sell by the pound. He's soggy, loose-made and deep-sided—much like his Double Down sire pictured here.

Born a twin, he had a slow start, but has grown out well into what will be a really useful bull for breeding mature cows.



Double Bar D Double Down 142H

Tested Non-Diluter

CE	WW	YW	MCE	MWW	API	TI
-1	76	104	-4	69	99	70
95	30	35	99	50	50	25



S/M LASER L511

4211599

2/16/2023 BW 74 AWW 796/ 108 AYW 1402/ 110 Horned

IPU Radium 20A

S/M Diesel D141

S/M Franchesca B141

Sibelle Dirty Harry 25Z

S/M Kaylene J511

S/M Karinna W591

We still use Diesel D141 by AI though he's long gone, because he's so dependable for calving on heifers. He also makes nice, milky daughters and can power up his bull calves too—which he's done in this big calf, Laser L511.



S/M Diesel D141

Born unassisted and small from a first-calf heifer, he took off growing and has no quit in him. Top indexing bull calf at yearling. There's a lot of beef here, given the high roughage, moderate growth ration that we feed our bulls. Long spined with lots of muscle hanging on a larger frame.

The bull is calm, friendly, easy to be around—as was his sire. Deep, dark red in color, single goggle.

Tested Non-Diluter

CE	WW	YW	MCE	MWW	API	TI
8	76	104	3	71	106	68
25	30	30	50	40	25	55

Breeding Soundness Guarantee

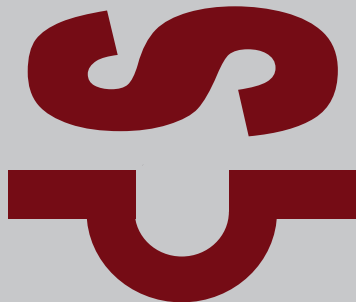
Bulls will be semen tested and given a Breeding Soundness Evaluation by a licensed veterinarian prior to delivery. If a bull fails his evaluation, or is hurt before delivery, your deposit will be returned.

As per the ASA Standard Guarantee, bulls are guaranteed to be breeders (defined as the ability to settle healthy cows by the time the bull is 18 months of age) with the exception of:

- **injury or disease occurring to the animal after time of sale**
- **gross negligence or willful misconduct on the part of the purchaser**
- **bulls shown competitively after sale**

There is no guarantee that the bull will freeze semen. Seller will not be liable for any damages beyond either replacement or refund for a bull that is proven in his first season to be a non-breeder.

Please if your bull isn't breeding, let us know as soon as you confirm it so that we're aware of any problem with him.



REFERENCE SIRES

KUNTZ KINGPIN 2H

3968312 1/05/2020
 BW 104 AWW 836
 YW 1666 Polled
 Non-Diluter

Kuntz Kingpin 2H stood out as the most powerful, deep and stout polled Fleckvieh bull of the 2021 sale season. His dam Miss Moses is a broody tank of a cow, with three sons in purebred herds across Canada.



Check out his EPDs based on two crops of calves. Kingpin is proving to be a breakthrough sire, with excellent calving ease—AND performance/power. Sons are uniformly thick, beefy and attractive. Daughters are classy, big-barreled, tidy-uddered females—the first of them calving now. US semen available.

CE	WW	YW	MCE	MWW	API	TI
9	90	135	3	86	121	81
15	1	1	60	1	2	1

FGAF GRANGER 060G

3739260 1/31/2019
 BW 88 AWW 785
 YW 1361 Polled
 Non-Diluter

This is our third set of calves by FGAF Granger 060G. We purchased him as the high-selling bull in Ferme Gagnon's 2020 sale to moderate frame and add thickness. He does that. He's also easy calving, has powerful



growth, and daughters are attractive, tidy-uddered, productive females.

Granger is sired by Sibelle Dirty Harry, who makes his progeny stout, soft and soggy. His polled dam is a deep-sided, thick yet feminine female at FGAF that has now produced four top sale bulls for them.

US semen available.

CE	WW	YW	MCE	MWW	API	TI
13	67	95	7	71	115	68
3	65	60	4	60	10	25

REFERENCE SIRES

SIBELLE ARTHUR 39B

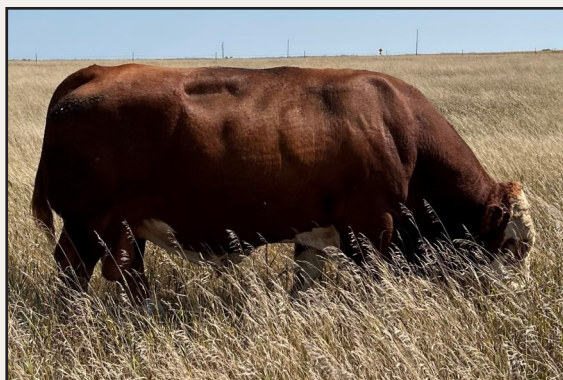
2981208 3/19/2014
BW 112 AWW 907
YW 1613 Horned
Non-Diluter

Sibelle Arthur 39B consistently sires what we invested in this great sire to contribute to our genetics: volume, power and thickness. His sons are powerful beef bulls. Daughters are feminine with excellent

udders, and pass on his beef type to their calves. Arthur (pictured in his ninth breeding season) was still sound, big-footed, and in great shape. After deeply influencing our herd for nearly a decade, he was injured—and this year's calves are the last by natural service.

Arthur has two sons on offer this year.

Semen is available for the US, Canada, Mexico and the EU.



CE	WW	YW	MCE	MWW	API	TI
7	70	88	4	67	112	65
30	60	60	45	85	10	45

DOUBLE BAR D DOUBLE DOWN 142H

3968313 3/05/2020
BW 94 AWW 1055
YW 1575 Horned
Non-Diluter

We renamed this massive son of Anchor D Motown, for what we expected him to do for us: Double Down on the thickness, muscle, barrel and correctness so evident in this bull.

His sire has earned a reputation for calves that are big-middled, deep-fleshed, the ideal Fleckvieh type. Double Down was number one for both weaning and yearling performance among his herd-mates in the Double Bar D herd. Like him, his calves have his power. They are thick and correct. Two high-performing sons in the 2024 offering.



CE	WW	YW	MCE	MWW	API	TI
3	87	126	-3	80	105	73
75	2	3	99	10	30	10

REFERENCE SIRES

SANMAR POLLED PHARAO 12P

2328741 1/13/2004
 BW 88 AWW 807
 YW 1371 Polled
 Non-Diluter

Pharao is a Canadian bred bull that is known for his calving ease, and moderate, big-middled females. We re-imported the last semen available for the US to use on heifers — and where his moderate stature would benefit big, powerful cows.

We have two good Pharao sons on offer this year.



CE	WW	YW	MCE	MWW	API	TI
13	57	77	10	58	128	69
3	95	99	1	99	1	25

S/M DIESEL D141

3139581 3/17/2016
 BW 90 AWW 832
 YW 1352 Polled
 Non-Diluter

S/M Diesel D141 has done an amazing job for us. We retained him for use on heifers, and he became our go-to for calving worry free.

In addition, his sons are attractive, solid dark colored with lots of pigment, plenty of growth to them. His first daughters are very feminine, milky, good-uddered females. Diesel was super friendly as a calf, and he passes that sweet disposition to his calves, too.

Diesel has one son on offer this year.

US semen available.



CE	WW	YW	MCE	MWW	API	TI
13	70	97	9	69	119	72
3	55	55	2	70	3	15

FUTURE SIRES

IPU POL ELEVATION 144K

4296280 1/30/2022

BW 90 AWW 790

Polled Non-Diluter

In our continuing search for sires that are both ideal in type and with balanced, real-world EPDs, we found and purchased this young polled sire from Barry LaBatte in Saskatchewan last spring. With his Calving Ease EPDs, we used him on heifers. And

with his deep-bodied beef type and the reputation of his sire for highly productive daughters, we used him on a set of good young cows too. His first calves are arriving now.



CE	WW	YW	MCE	MWW	API	TI
3	68	93	2	69	91	64
70	60	65	65	70	80	55

JNR BARBARIAN

1395725 CSA 12/18/2021

BW 103 AWW 911

Horned Non-Diluter

What a bull is this guy! Through the decades as we developed the polled cattle of S/M Fleckvieh, we've always used the very best horned sires back on them—to continually build them not only polled—but good.

So when Barry LaBatte offered us an exclusive semen pack on the 2023 high-selling Canadian sire, JNR Barbarian, we jumped at the opportunity. The bull is just massive, muscled, big-barreled, long, strong topped and correct as they come.

His first calves in the US will be arriving here soon—and are we ever eager to see them come.



CE	WW	YW	MCE	MWW	API	TI
3	68	93	2	69	91	64
70	60	65	65	70	80	55

S/M FLECKVIEH CATTLE

2024 Private Treaty Bull Sale Prices

Thank you for taking a look at our 2024 Sale Bulls. They are available for sale by private treaty, at a pre-set price, **with a bid-off on March 4** for any bulls that are asked for by noon on that date, by more than one person. A check for half down will hold your bull until April, when we semen check and give a breeding soundness exam, give spring breeding shots and can deliver up to 250 miles to you.

The prices of the 2024 bulls:

S/M Linchpin L001	\$ 5,000
S/M Lineman L282	\$ 4,000
S/M Linebacker L572	\$ 5,000
S/M Lincoln L211	\$ 4,000
S/M Leader L412	\$ 4,000
S/M Ledger L413	\$ 5,000
S/M Lancelot L581	\$ 5,000
S/M Landmark L592	\$ 3,500
S/M Lariat L402	\$ 4,500
S/M Lawman L512	\$ 3,500
S/M Landlord L171	\$ 4,000
S/M Landslide L502A	\$ 3,000
S/M Laser L511	\$ 4,000

Jeff Sorenson

605-359-8728 sorenson@augie.edu

website: www.smfleckvieh.com



S/M Fleckvieh Cattle
Jeff Sorenson
48186 257th Street
Garretson, SD 57030

